

PUBLIC AUCTION



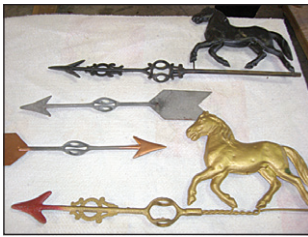
— LOCATION —

HOPKINS, MO

DIRECTIONS: From Bedford, IA: Go 8 miles south on 148, then 1 mile east on 105th St. From Hopkins: Go 1 mile north on 148, then 1 mile east on 105th St. Watch for signs.

SATURDAY
APR. 2

Commencing at 10:00 A.M.



Hunting & Fishing

2-Man 8' Bass Hunter Boat
Hummingbird Fish Finder
12-Volt Trolling Motor (34# Thrust)
Lifejackets
Several Mounted Horns Incl:
Unusual 11 pt. Deer Head w/"Unicorn"
(Score 157 7/8)
9pt. Deer Head
Water Buffalo
Texas Longhorn
Buffalo
Pronghorn Sheep
Multi-Horn Display
Several More Mounts

R&J Arnold (London) Stone Bottles
Old Yarn Dispenser
Large Ronson Cigarette Lighter
Fishing Weight Mold
Coleman Kerosene Lamp
Old Trial Size Borax (Unopened)
Old Western Motif Pins
Mother of Pearl Fountain Pens
Old Duck Figurines
White Hen on Nest
Whetstone Knife Sharpener
Homemade Rock Tumbler
Abalone; Piece of Myrtlewood
Agates from Lake Superior & Other
Various Rocks
Old Picture Frames; Old Bicycle
(2) Buzz Saw Blades
Single Hog Oiler
Sipe Mfg (KC) Double Hog Oiler
Feed Mill #0 Mill Grinder
(4) 14" Wire Spinner Hubcaps
Hood Ornaments & Mirrors

300-Gal Diesel Barrel on Stand
(10) 2' Corral Panels; (4) Bale Rings
Fence Stays; Fence Braces
(2) Small Quonset Huts
300 & 750 Gal Poly Stock Tanks
150-Gal Rubbermaid Tank
(2) 12' Feed Bunks
Mineral Feeder; Chain Link Fence
Lil' Creeper 1-Sided Calf Feeder
2-Sided Cox Portable Feeder (Like New)
325-Gal Plastic Tank w/Valve & Hose
Many Good Hedge Corner & Line Posts

Consigned by Lloyd Hansen & Bo Hansen

JD B 1942 Tractor (Parade Ready)
IH 560 1958 Propane Tractor-Wide Front-
Fast Hitch (Parade Ready)
AC D17 1958 Tractor-propane-Wide
Front-Snap Coupler
Farmall A 1947 Tractor w/Side Mount 6'
Mower
Koering Highlift 1964 MM on Jet Star 3
JCB 1400 B Backhoe-Extended Hoe &
Loader 4x4 (Needs Work)
JD 510 Baler (Completely Gone Thru 1
Year Ago)
Gehl 1090 9' Swather (Excellent)
JD 38 Bar Mower
AC Snap Coupler 316 Slotted Plow
AC Pull-Type Mower (Minus Bar)
Longwood Wood Furnace
Wisconsin VF 27-HP Mower
1986 1/2 Ton Chevy 4x4 350 Motor 4-sp-d
1983 Mark Twain 18' Boat-In Board-350
V-8 (Bad Motor)
1979 Boat Trailer
18.4 38 Clamp-On Duals
(4) 16.9x26 Combine Tires
(3) 18.4x26 Combine Tires
10.00x20 Truck Tires
3000-Gal Water Tank
Rockwell Drill Press
Hawkeye Hyd Press
Duncan Phyfe Table w/4 Straight Back &
1 Capt Chair
Oak Teacher's Desk
Misc. Household



Antiques & Collectibles

Jim Beam Decanters:
(2) Pony Express Sacramento to St. Joe
50th Anniversary American Legion
Ducks Unlimited
Laramie, WY Centennial
Cheyenne, WY Centennial
NB Centennial
Fort Sill, OK Centennial
Other Misc. Decanters
Parlor Table
Old Maryville "The College Town" Metal
Cut-Out Sign w/Bearcats on Ends
Horse Weather Vanes
Arrow Weather Vanes
Several Lightning Rod Bulbs (Various Colors)
Homer Laughlin "Blue Bird" Sugar,
Creamer & Milk Pitcher
1950's Mechanical Bank (Hunter w/Squirrel)
Butter Mold
Several "NIB" Toys Incl.
AC 7045 Farm Set
AC Barge Wagon
Jimmy Spencer "Enerzizer" Race Car
Ertl Gravity Feed Wagon
Winn Dixie Model "T" Bank
Revel Thanes Panel
Peterbilt 387 50th Ann. AGCO Toy Truck
Structo Stubnose Truck
Dirt Hauler Truck
1957 Chev Nomad Display Car
"Mutti Motors" Model Cars
Railroad Lanterns (2 Dressel, 1 Dietz-
Vesta, 1 Unmarked)
Kerosene Lanterns
2-Cyl Maytag Motor
Denver Dairyman's Milk Bottles
Horse & Indian Bookends
Ornate Brass Doorknobs

for Older Cars
Framed Display of Antique Beautician
Styling Instruments & Novelties

Tools & Misc.

Craftsman Professional Workbench
Campbell Hausfeld Mig 80 Wire Welder
Sachs Dolmar 102 Chainsaw
Sears 6 or 12V Battery Charger w/200
amp Start
Vise; Elec Drill Bit Sharpener
Handyman Jack; Baler Belt Splicer Kit
Soldering Gun; Troweling Tools
Welding Helmet & Gloves
Hanes; Block & Tackle; Pitchforks
7x50 Binoculars
Coleman Camp Stove
Coleman Gas Lantern
Freon; Stop Leak; Bales of Twine
Misc. Tools; Snow Fence; Household Safe

Tractors, Farm & Cattle Equip.

1976 AC 7000 Diesel Power Shift -Wide
Front-3 Ranges-Cab & Air w/Deluxe Pkg
AC WD Narrow Front-12V
5' Snap Coupler Blade
8' Keewanee Blade w/Tilt Cylinder
Gehl 1500A Baler
451 NH 9' 3Pt Sickle Bar Mower
(7) 94# Tractor Weights for AC 7000
3-Pt. Bale Stabber; AC 13' Disc
AC 7' Side Mount Sickle Mower
NH Rake w/Dolly Wheels
Barge Wagon w/Hoist
BMB 3PT 6' Rotary Mower (Bad Gear Box)
Lowboy Frame; 12' Drag Harrow
2-Row Snap Coupler Cultivator
AC 2-16 Plow
AC WD 2-Row Corn Picker

Guns & Archery

Winchester Model 270 22-Pump w/Tasco
Scope
Marlin Model 60 22 Auto w/Scope
Foreign Made 12-Gauge Pump (Resem-
bles 870 Remington)
Ultra 87 12-Gauge Pump
(3) Pellet Rifles; Hunting Knives
Hoyt Right-Hand Compound Bow
Jennings Buckmaster Right-Hand
Compound Bow
PSC Nova Right-Hand Compound Bow



Garland & Pat O'Riley

Brookshier & White
Auction Service

LUNCH ON
PREMISES

LOADER
TRACTOR
AVAILABLE

JOHN WHITE - Hopkins, Mo.,
Home: 660-778-3293
Cell: 660-562-9657

— AUCTIONEERS —
Clerks: JEANETTE BROOKSHIER
& DEBBI WHITE

BILL BROOKSHIER - Graham, Mo.,
Home: 660-939-4177
Cell: 660-582-1245

For information and more pictures: www.colbill.com

TERMS: Cash. Proper ID required. Announcements made day of auction take precedence over all advertisements.